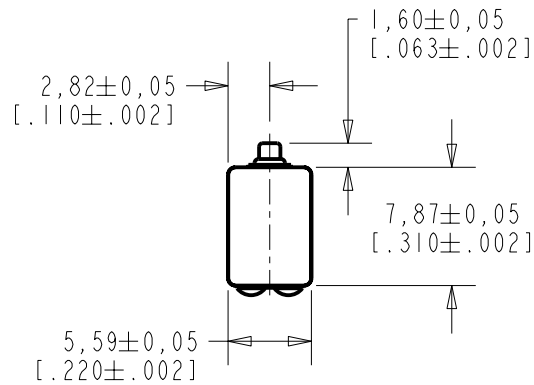


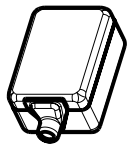
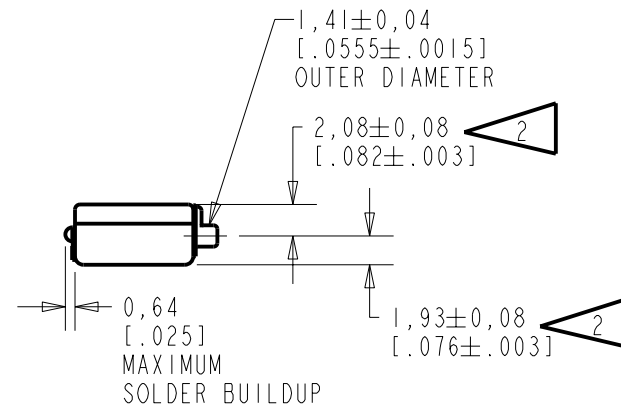
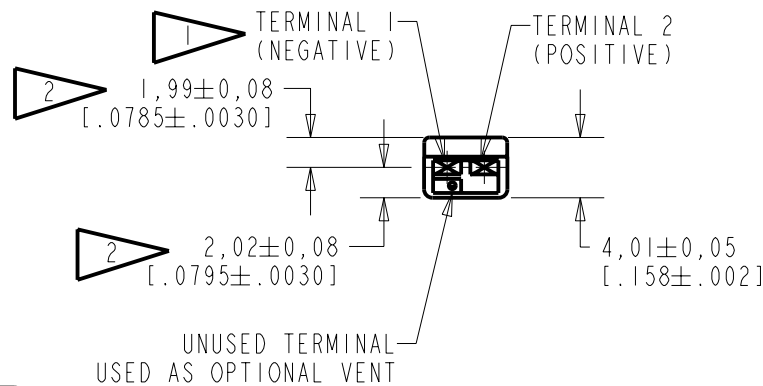
BK-26824-000

SHT 1.1



NOTES:

- 1 A POSITIVE GOING VOLTAGE AT TERMINAL 2, RELATIVE TO TERMINAL 1, CAUSES A DECREASE IN PRESSURE AT THE SOUND OUTLET.
- 2 LOCATED FROM TWO SURFACES FOR CUSTOMER CONVENIENCE. ONLY APPLICABLE FROM ONE SURFACE, NOT TO BE USED TOGETHER. HORIZONTAL LOCATION FOR TERMINAL CENTERED TO $\pm 0,17$ [.007].



NOMINAL WEIGHT
.66 GRAM

DIMENSIONS IN MILLIMETERS [INCHES]

Revision	C.O. #	Implementation Date	RELEASE LEVEL	REVISION
B	C10104206	5-8-06	Released	B
A	C10102702	6-9-05		

SCALE: 2:1		DR. BY: MMM	DATE: 6-9-05
DO NOT SCALE DRAWING			
TITLE: RECEIVER		BK-26824-000	
OUTLINE DRAWING		SHT 1.1	
		APP. BY: GJP	DATE: 6-22-05
		APP. BY: GJP	DATE: 6-22-05

KNOWLES ELECTRONICS
ITASCA, ILLINOIS U.S.A.

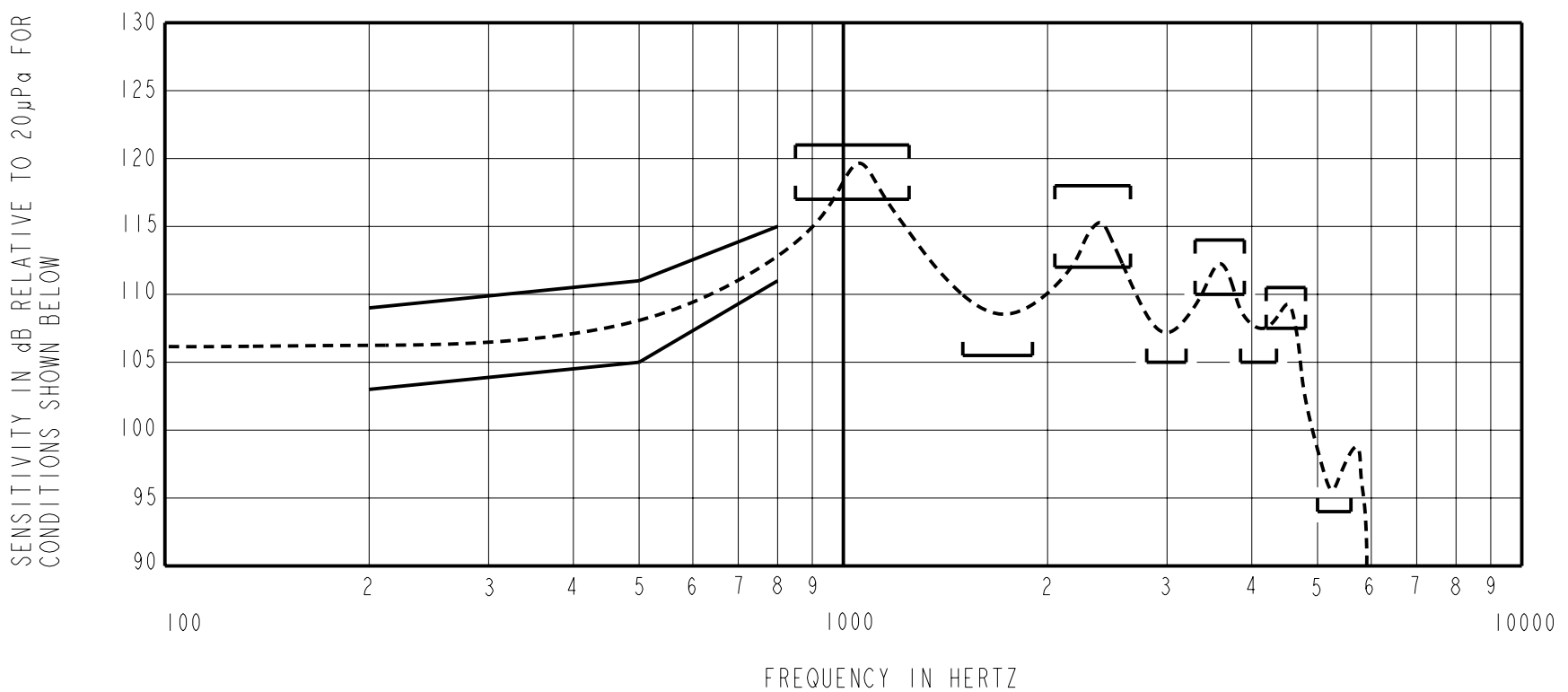
THE BK-26824-000 IS A BALANCED ARMATURE RECEIVER WITH A HIGH DCR/IMPEDANCE RATIO. THE LOWER TERMINAL PAD CONTAINS A VENT COVERED WITH A REMOVABLE SEAL.

NO DAMPING

BK-26824-000

SHEET 2.1

CONSTANT VOLTAGE DRIVE CONDITIONS



ACOUSTICAL

SENSITIVITY
 DEVICE WILL PRODUCE THE SPL LISTED BELOW UNDER TEST CONDITIONS DESCRIBED IN TABLE 3.
 NOMINAL SENSITIVITY AT 500 Hz IS dB RELATIVE TO 20µPa. ALL OTHER VALUES
 IN dB RELATIVE TO THE SENSITIVITY AT 500 Hz. TEST DATA MEASURED WITH VENT SEALED.

FREQUENCY (Hz)	MINIMUM	NOMINAL	MAXIMUM
200	-5.0	-2.0	+1.0
500	-3.0	108.0	+3.0
800	+3.0	+5.0	+7.0
850-1250	+9.0	+11.0	+13.0
1500-1900	-2.5	---	---
2050-2650	+4.0	+7.0	+10.0
2800-3200	-3.0	---	---
3300-3900	+2.0	+4.0	+6.0
3850-4350	-3.0	---	---
4200-4800	-0.5	+1.0	+2.5
5000-5600	-14	---	---

PORT LOCATION: 12S

TABLE 1

TOTAL HARMONIC DISTORTION
 DEVICE WILL NOT EXCEED TOTAL HARMONIC DISTORTION LEVELS LISTED BELOW.

FREQUENCY (Hz)	AC DRIVE (V rms)	DC BIAS (mA)	LIMIT (%)
500	0.075	0	10
500	0.21	0	10

TABLE 2

TEST CONDITIONS

NOMINAL SOURCE VOLTAGE	0.075 V rms, 0 mA DC BIAS
SOURCE IMPEDANCE	<1 Ohm
TUBING	8mm x 1mm ID + 28mm x 1.5mm ID EAR HOOK SIMULATOR + 25mm x 2mm ID TUBE + 18mm x 3mm ID TUBE
COUPLER CAVITY	2 CM ³ , SIMULATED ANSI S3.7 TYPE HA-3 (IEC 126)

TABLE 3

ELECTRICAL

DC RESISTANCE	10.7 Ohms ± 10%
IMPEDANCE @ 500 Hz	16 Ohms ± 15%
IMPEDANCE @ 1kHz	29 Ohms ± 15%

TABLE 4

ISOLATION: CASE WILL BE ELECTRICALLY ISOLATED FROM THE COIL CIRCUIT.

TEMPERATURE: OPERATING RANGE FROM -17°C TO 63°C (SENSITIVITY WILL NOT VARY BY MORE THAN ±3 dB WITHIN RANGE)
 STORAGE RANGE FROM -40°C TO 63°C

Revision	C.O. #	Implementation Date	RELEASE LEVEL	REVISION
B	C10104206	5-8-06	Released	B
A	C10102702	6-9-05		

<p>KNOWLES ELECTRONICS ITASCA, ILLINOIS U.S.A.</p>	WHEN TEST LIMITS ARE USED TO ESTABLISH INCOMING INSPECTION ACCEPTANCE/REJECTION CRITERIA, CORRELATION OF TEST EQUIPMENT WITH KNOWLES IS ALSO REQUIRED FOR ELIMINATION OF EQUIPMENT AND TEST METHOD VARIATION	DR. BY DATE MMM 6-9-05
	TITLE: RECEIVER PERFORMANCE SPECIFICATION	BK-26824-000 SHT 2.1
	GJP 6-22-05	GJP 6-22-05
	APP. BY DATE GJP 6-22-05	GJP 6-22-05